
Technical sheet

MLT 625 75 H

Telehandlers



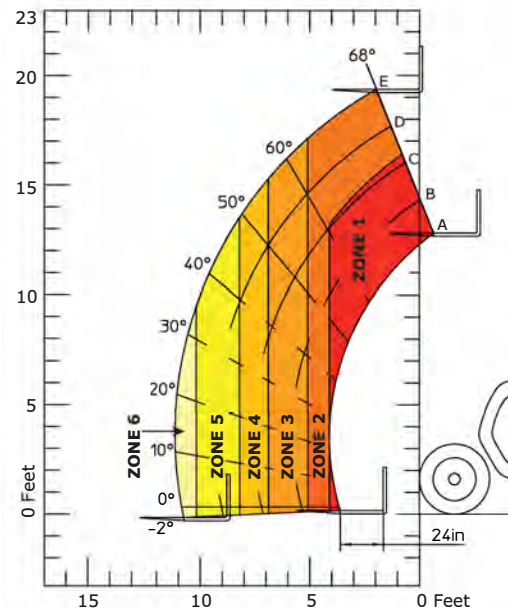
 **MANITOU**
HANDLING YOUR WORLD

MLT 625 Specifications

Capacities	
Max. capacity	5,500 (2500 kg)
Max. lifting height	19 ft. 5 in (5.90 m)
Max. outreach	10 ft. 11 in (3.30 m)
Reach at max. height	1 ft. 7 in. (0.50 m)
Breakout force with bucket	9,453 lbf. (42 kN)
Weight and dimensions	
Unladen weight (with forks)	10,850 lbs. (4921 kg)
m4 - Ground clearance	15 in. (380 mm)
l2 - Overall length to carriage (with hitch)	12 ft. 9 in (3.90 m)
y - Wheelbase	7 ft. 6 in. (2.30 m)
b4 - Overall width of cab	2 ft. 8 in. (800 mm)
b1 - Overall width	5 ft. 11 in (1.81 m)
h17 - Overall height	6 ft. 4 in. (1.92 m)
a4 - Crowd angle	12 °
a5 - Dump angle	117 °
Wa1 - External turning radius (over tires)	10 ft. 10 in. (3.31 m)
Standard tires	300 / 75 R18
Performances	
Lifting	7.30 s / -
Lowering	4.95 s / -
Extension	5.20 s / -
Retraction	3.70 s / -
Crowd	3.20 s
Dump	3.20 s
Engine	
Brand	Kubota
Environmental norm	Tier IV Final (Stage 5)
Type	V3307-CR-T-E5B
Number of cylinders - Cubic capacity	4 cyl. 204 in ³ (3331 cm ³)
Power	74.3 hp (55.40 kW)
Max. torque @ 1400 rpm	195 ft. lbs. (265 Nm)
Reversible fan	Standard
Transmission	
Type	Hydrostatic
Number of gears (forward/reverse)	2 / 2
Max. travel speed	17 mph (28 km/h)
Differential lock	Limited slip differential on front axle
Parking brake	Automatic negative parking brake
Service brake	Hydraulic oil immersed multi-disc braking on front axle
Hydraulics	
Hydraulic pump type	Gear pump
Hydraulic flow	22.7 gpm (86 l/min)
Hydraulic pressure	3408 psi (235 bar)
Tank capacities	
Hydraulic oil	30.4 gal. (115 l)
Fuel	16.6 gal. (63 l)

Standard / Optional Features S : Standard / O : Optional / - : N/A

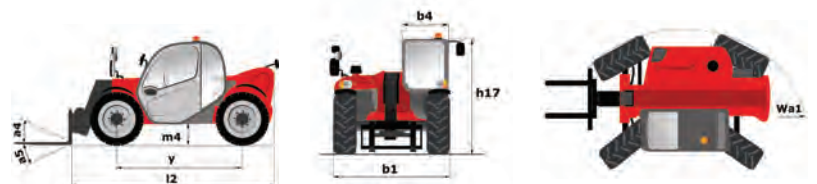
	Basic Package	CRC Package
General		
Quick drain fitting	S	S
Hand throttle	O	S
Speed limiter	-	S
"Active CRC" boom suspension	-	S
Auto reversing fan	S	S
Manual rotating towing hitch	S	S
Comfort		
Tuner car radio (50 W)	S	-
Bluetooth car radio with integrated microphone (100 W)	-	S
Manual air conditioning	S	S
Air suspension cloth-covered seat	S	S
Hydraulic		
Easy Connect System (ECS)	S	S
Continuous flow hydraulics	-	S
Attachment hydraulic flow control system	-	S
Return pipe to hydraulic oil tank	O	O
Combined movements (flow sharing distributor)	S	S
Attachment hydraulic locking	S	S
Electricity / Safety		
Front and rear LED work lights on cab (x4 : 2 front + 2 rear)	S	S
Back-up Alarm	S	S
LED work lights on boom head (on fixed part) (x2)	S	S
Flat LED rotating beacon (-71 mm)	S	S



LOAD CHART
24" load center per ANSI/ITSDF B56.6

LOAD ZONES

- 5,500 lbs. (2500 kg)
- 4,400 lbs. (2000 kg)
- 3,300 lbs. (1500 kg)
- 2,650 lbs. (1200 kg)
- 2,000 lbs. (1000 kg)
- 1,650 lbs. (800 kg)



This publication in no way constitutes an offer and the company reserves the right to alter specifications without notice.

© 2019 Manitou North America, LLC. Manitou. All rights reserved. Printed in the U.S.A. A Manitou Group Brand - MLT625_S5_tds_NA_(03-2019)