

# MT 1840 TIER IV

MT SERIES PREMIERE CONSTRUCTION telescopic handler

## KEY FEATURES

- > Perkins 100 HP (75 kW) Final Tier IV Engine
- > 9,000 lbs. (4082 kg) Capacity
- > 57 ft. 7 in (17.55 m) Lift Height
- > New Unit Utilizes DEF for Tier IV
- > Standard Unit with Enclosed Cab with Vinyl Seat, Heat and optional A/C
- > Standard Stabilizers
- > Frame Leveling
- > JSM Joystick Controls
- > Remote Boom Control
- > 4-Wheel Drive / 4-Wheel Steer
- > Variety of Attachments;  
Buckets, Jibs and Platforms  
*(Work Platforms only available on the MT 1840 A model)*

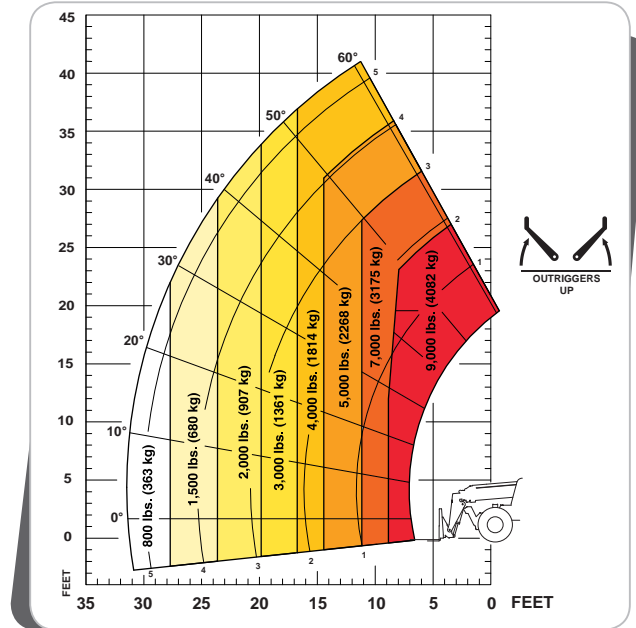


 **MANITOU**  
HANDLING YOUR WORLD

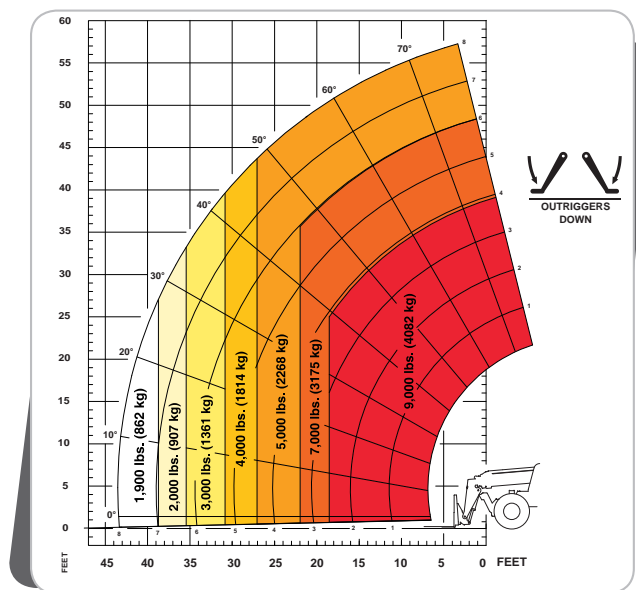
# MT 1840 SERIES PREMIERE CONSTRUCTION TELESCOPIC HANDLER SPECIFICATIONS

		MT 1840	MT 1840 A*
KEY PERFORMANCE	Lift Capacity (kg)	9,000 lbs. (4082)	9,000 lbs. (4082)
	Maximum Lift Height (m)	57'7" (17.55 m)	57'7" (17.55 m)
	Capacity at Maximum Lift Height with Stabilizers (kg)	5,000 lbs. (2268)	5,000 lbs. (2268)
	Maximum Forward Reach (m)	42'11" (13.08 m)	42'11" (13.08 m)
	Capacity at Maximum Forward Reach with Stabilizers (kg)	1,900 lbs. (862)	1,900 lbs. (862)
	Break-out Force with Bucket (daN)	17,760 lb/f (7,900)	17,760 lb/f (7,900)
ENGINE	Manufacturer	Perkins	Perkins
	Aspiration	Turbocharged	Turbocharged
	Power (kW) @ rpm	100 hp (75) @ 2500	100 hp (75) @ 2500
	Model	854F E34TA Tier IV	854F E34TA Tier IV
	Maximum Torque (Nm) @ 1400 rpm	317 ft.-lbs. (430)	317 ft.-lbs. (430)
COMPONENTS	Transmission	Powershuttle, 4 Wheel Drive	Powershuttle, 4 Wheel Drive
	Maximum Travel Speed (km/hr)	21.7 mph (35)	21.7 mph (35)
	Selective Steering	2-Wheel, 4-Wheel, Crab	2-Wheel, 4-Wheel, Crab
	Service Brake	Multiple disc brakes, hydraulic front and rear axles	Multiple disc brakes, hydraulic front and rear axles
	Parking Brake	Automatic & Manual	Automatic & Manual
HYDRAULIC SYSTEM	Pump Type	Dual Gear	Dual Gear
	Total Capacity (L/min)	45 gpm (170)	45 gpm (170)
	System Pressure (bar)	3916 psi (270)	3916 psi (270)
GENERAL SPECIFICATIONS	A. Front Wheel Center to Carriage (m)	6'8" (2.04)	6'8" (2.04)
	B. Wheelbase (m)	10'0" (3.07)	10'0" (3.07)
	C. Rear Wheel Center to Rear Face (m)	3'9" (1.16)	3'9" (1.16)
	D. Length - Without Forks (m)	20'7" (6.27)	20'7" (6.27)
	E. Ground Clearance (mm)	16.5" (420)	16.5" (420)
	F. Overall Width of Cab (m)	35" (0.89)	35" (0.89)
	H. Overall Width (to Outside of Tires) (m)	7'11" (2.42)	7'11" (2.42)
	I. Overall Width (Stabilizers Lowered) (m)	12'6" (3.79)	12'6" (3.79)
	J. Overall Height (m)	8'3" (2.51)	8'3" (2.51)
	Approximate Weight (kg)	25,794 lbs. (11,700)	27,337 lbs. (12,400)
	Outside Turning Radius (m)	13'2" (4.01)	13'2" (4.01)
	Standard Tires	440/80-24	440/80-24
	CAPACITIES	Fuel Tank Capacity (L)	37 gal. (140)
DEF Tank Capacity (L)		3.2 gal. (12)	3.2 gal. (12)

## Machine on Tires with Forks



## Machine on Stabilizers with Forks



## DIMENSIONS REFERENCE DIAGRAMS

