

---

TECHNICAL DATA SHEET

# **MT 420 H NEW COMPACT**

**Manitou Telescopic**

---



# MT 420 H NEW COMPACT TELEHANDLER

## MT420 H New Compact Telehandler

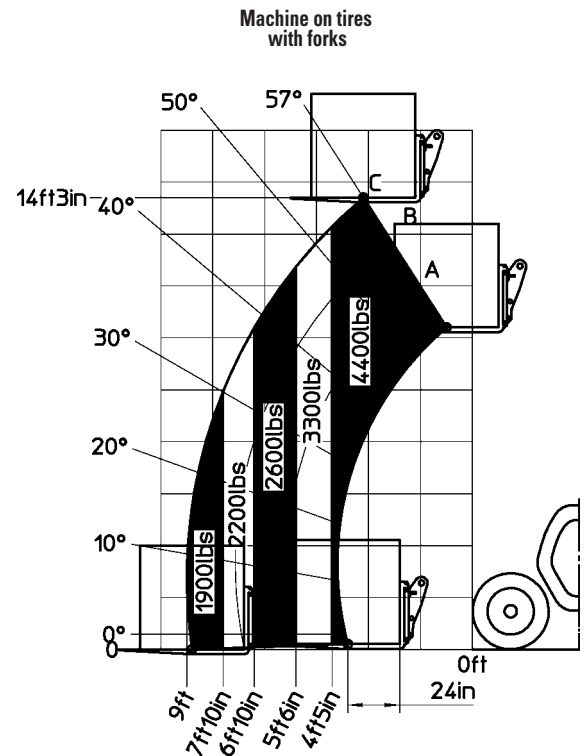
Lifting	
Max. capacity	4,400 lbs. (2000 kg)
Max. lifting height	14 ft 3 in (4.30 m)
Max. outreach	9 ft 0 in (2.74 m)
Tires	
12-16.5 12PR SKS CL TUBELESS	
Braking	
Service brake	Driveline Disc brake
Parking brake	Automatic Negative
Unladen time	
Lifting	5.0 s
Lowering	3.5 s
Extension	4.8 s
Retraction	3.0 s
Crowd	3.3 s
Dump	2.7 s
Engine	
KUBOTA	
Type	V2607-TIER IV
Cubic capacity	4 cylinders - 2615 cm <sup>3</sup>
Power	56.3 hp (42 kW)
Max. torque	128 ft.-lbs. (174 Nm) at 1600 rpm
Injection	direct
Cooling	water

Transmission	
Hydrostatic	
Reversing shift	electro-hydraulic
Number of gears (forward/reverse)	2/2
Drive wheels	4 wheel drive
Steering mode	4 wheel steer - 3 Steering Modes
Max. travel speed (may vary according to applicable regulations)	15.5 mph (25 kph)

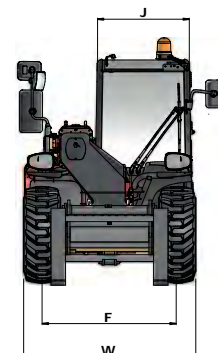
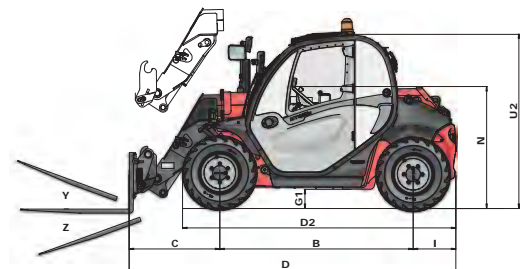
Controls	
JSM <sup>®</sup> Joystick multi - function	
Hydraulics	
Pump	gear type 17 gpm (65 l/min) – 235 bar (3400 psi)

Capacities	
Cooling system	2.27 gal (8.6 l)
Oil engine	2.69 gal (10.2 l)
Hydraulic oil	18 gal (70 l)
Fuel	16 gal (60 l)
<b>Unladen weight (with forks)</b>	<b>9,237 lbs. (4190 kg)</b>

Dimensions	
B. Wheelbase	7 ft 0 in (2.13 m)
D. Overall length to carriage	11 ft 11 in (3.63 m)
G1. Ground clearance	9.5 in (0.24 m)
J. Overall width of cab	31 in (0.79 m)
W. Overall width	4 ft 11 in (1.49 m)
U2. Overall height	6 ft 3 in (1.90 m)
Y. Crowd angle	12°
Z. Dump angle	116°
Turning radius (over tires)	10 ft 1 in (3.06 m)



According norme  
ANSI / ITSDF B56.6-2011



This brochure describes versions and configuration options for Manitou products which may be fitted with different equipment. The equipment described in this brochure may be standard, optional or not available depending on version. Manitou reserves the right to change the specifications shown and described at any time and without prior warning. The manufacturer is not liable for the specifications given. For more information, contact your Manitou dealer. Non-contractual document. Product descriptions may differ from actual products. List of specifications is not comprehensive. The logos and visual identity of the company are the property of Manitou and may not be used without authorisation. All rights reserved. The photos and diagrams contained in this brochure are provided for information only.

MANITOU BF SA - Limited company with board of directors - Share capital: 39,547,824 euros - 857 802 508 RCS Nantes

