

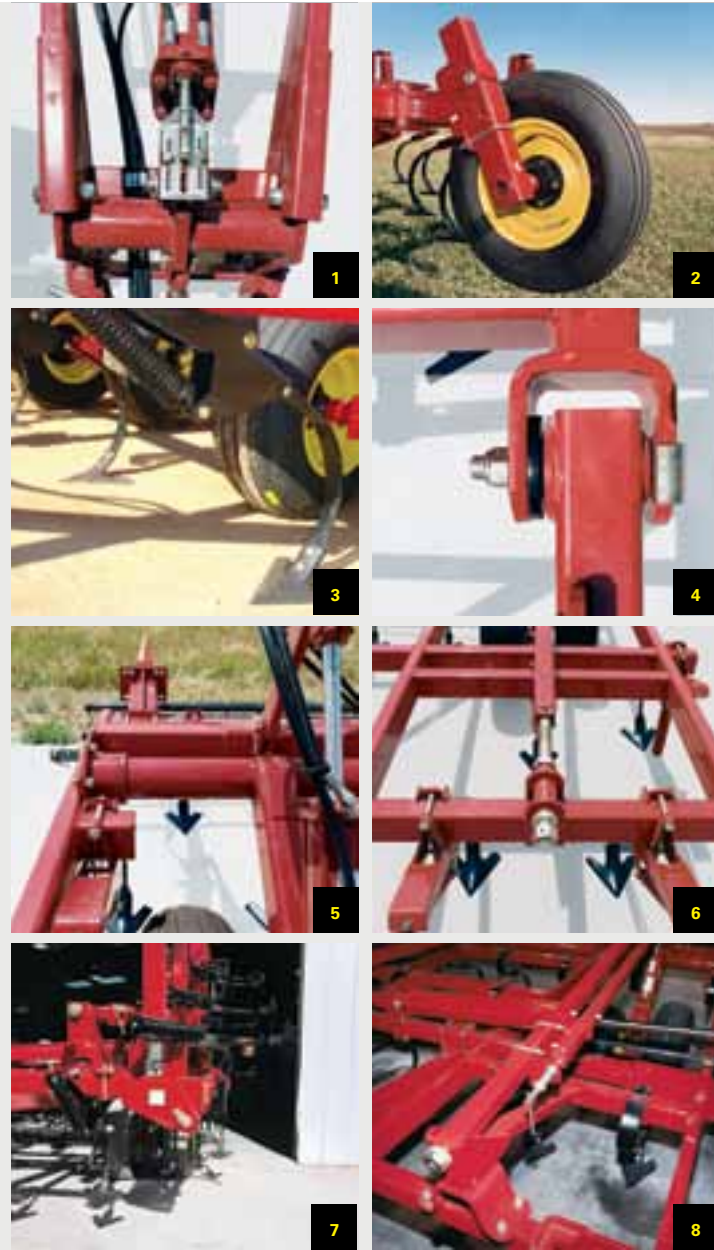
5000 SERIES FIELD CULTIVATORS

Performance That's Always On The Level

From residue management to field finishing, Sunflower 5000 Series Field Cultivators handle the job with outstanding clearance and superb flotation. Single-point depth control adjusts working depth of the entire machine, while the self-leveling hitch maintains a level frame from front-to-rear, regardless of operating depth. Heavy-duty gauge wheels are even standard equipment on units with a working width of 26' or more.

Best of all, Sunflower 5000 Series Field Cultivators are built with the strength and flexibility to handle today's high-horsepower tractors and frequent transport requirements. The Model 5135, for example, features three-section flexibility in our unique split-wing configuration. As a result, even the largest 42' model folds to a maximum transport height of 13' 6". Or move up to our Model 5055, which covers up to 62' per pass with five-section flexibility. With or without your choice of finishing attachments, Sunflower 5000 Series Field Cultivators leave a smooth, level surface that's ready to plant.

Sunflower - The Ultimate Answer



- 1. SINGLE-POINT DEPTH CONTROL** - Conveniently located for easy adjustments and offers accuracy up to 1/4". Note - This is the 18'-28' model shown. The 30'-62' models feature single point depth control located on the wing lift adjustment arm.
- 2. HEAVY-DUTY GAUGE WHEELS** - Heavy-duty gauge wheels are positioned to minimize gouging at the outer ends of the machine and deliver consistent depth. Optional swivel-type gauge wheels available.
- 3. LOW-PROFILE SHANKS** - An advanced simple design that features 190 lb. point load and 24" of underframe clearance. Computer designed shank placement provides outstanding trash flow in high residue applications.
- 4. UHMW WING HINGES** - Featuring ultra high molecular weight material sleeves that require no greasing, hold hinge joints tight and offer extended life.
- 5. UHMW ROCK SHAFTS** - Featuring exclusive polymer sleeves in traditional high wear areas. The UHMW material removes any greasing requirements, excessive wear and keeps frame structure tight. UHMW is used on several Sunflower tillage tools for better performance and reduced maintenance.
- 6. LIFT ADJUSTMENT ARM** - Provides an accurate adjustment to individual sections. This is key in high residue fields.
- 7. DROPPED CENTER FRAME HINGE** - The split wing 3-section models and all 5-section models feature a dropped hinge on the center frame and inner wing for reduced transport height and width.
- 8. SINGLE-POINT DEPTH CONTROL** - Single-point depth control is conveniently located for easy adjustments and offers accuracy up to 1/4". No need to adjust depth at each wheel location or use complicated electronics like competitive models.

5000 SERIES FIELD CULTIVATOR SPECS

MODEL NUMBER	NO. OF WIDTHS	WORKING WIDTHS (m)	SHANK SPACING (mm)	TRANSPORT WIDTH (m)	TRANSPORT HEIGHT (m)	EST. WT. (kg)
5035	10	18'-6" to 36'-6" (5.7 to 11.1)	6" (152.4)	13' to 17' (3.9 to 5.2)	8'-5" to 15'-1" (2.6 to 4.6)	6,000 to 10,450 lbs. (2721 to 4740)
5135 SW	4	36'-6" to 42'-6" (11.1 to 13)	6" (152.4)	15'-9" to 17'-9" (4.8 to 5.4)	13'-6" (4.1)	10,800 to 11,950 lbs. (4899 to 5420)
5055	6	44'-6" to 62'-6" (13.6 to 19.1)	6" (152.4)	17'-6" to 19'-6" (5.4 to 6)	11'-10" to 16' (3.4 to 4.9)	14,000 to 19,500 lbs. (6350 to 8845)

Note: Specifications may vary slightly based on tires, hydraulic system, or other possible variances. We are continually striving to improve our machines; therefore, these specifications are subject to change without notice.

OPTIONAL FINISHING ATTACHMENTS



THREE-ROW COIL TINE
A three-row coil tine with reel or a four-row coil tine section that can be adjusted for the desired pitch.



THREE-ROW SPIKE & REEL



FIVE-ROW SPIKE
A Five-Row Spike is regarded as our most maintenance-free finishing attachment.



FOUR-ROW SPIKE DRAG
The 4-Row Spike Drag is designed for heavy residue conditions.